

New !



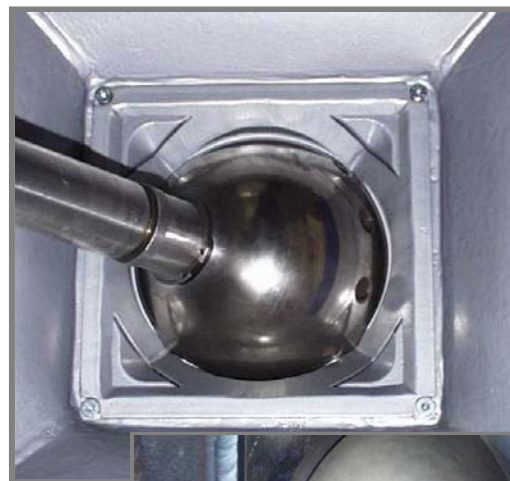
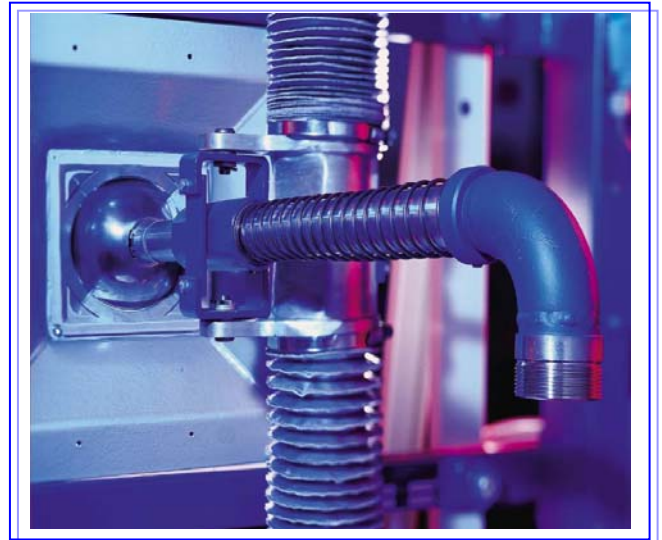
Optimisation of Already Installed Water Cannons

The New Wall Box with Ball Joint

The new Ball Joint, a cardanic support with integrated sealing, is Clyde Bergemann's improved frontal support point for the lance of a Water Cannon. The ball made of heat-resistant steel is guided in two rings with spherical surface that are coated as well. The novel support of the blowing lance in the ball enables quick exchange with safe fixing.

For the continuous air supply of the ball wall box a connection is intended to a separate fan.

This new Ball Joint warrants precise support with maximum swivelling angles and optimum, durable sealing of the furnace port at the same time.



Advantages:

- ⇒ Safe operation through precise support and maximum free movement
- ⇒ Reduced maintenance costs through wear-resistant ceramic coating
- ⇒ Clean Water Cannon operation and optimum accident protection through durable sealing
- ⇒ Can easily be retrofitted for existing Water Cannons

Contact:

Head Office:

Clyde Bergemann GmbH – Schillwiese 20 D-46485 Wesel
Phone: ++49(0)281/815-0 – Fax: ++49(0)281/53768 – <http://www.cbw.de>